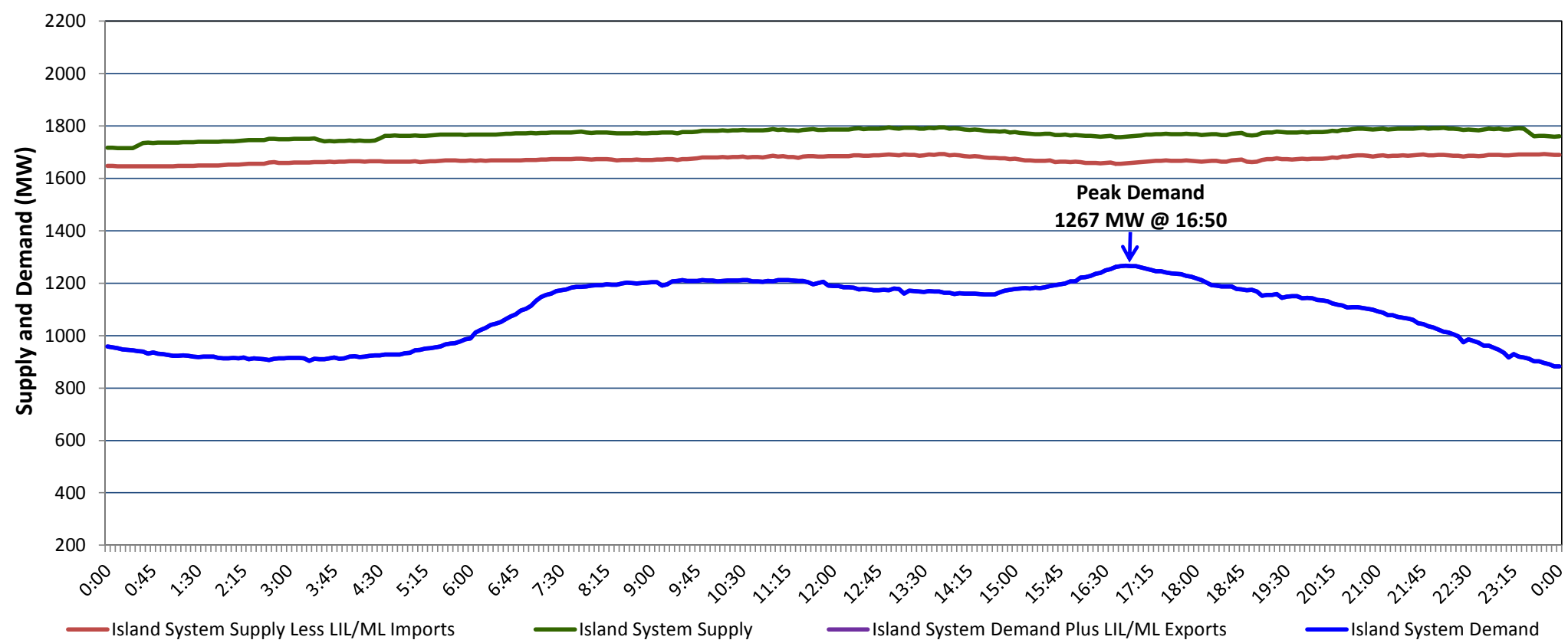


**Newfoundland Labrador Hydro (NLH)  
Supply and Demand Status Report Filed Tuesday, November 26, 2019**

**Section 1  
Island Interconnected System Supply, Demand & Exports  
Actual 24 Hour System Performance For Monday, November 25, 2019**



**Supply Notes For November 25, 2019**

- 1,2
- A As of 0800 hours, November 10, 2019, Holyrood Gas Turbine unavailable due to planned outage (123.5 MW).
  - B As of 1124 hours, November 17, 2019, Bay d'Espoir Unit 4 unavailable (76.5 MW).
  - C As of 1426 hours, November 19, 2019, Stephenville Gas Turbine unavailable due to planned outage 25 MW (50 MW).
  - D As of 0932 hours, November 23, 2019, St. Anthony Diesel Plant available at 8.85 MW (9.7 MW).
  - E As of 1957 hours, November 23, 2019, Bay d'Espoir Unit 3 unavailable due to planned outage 70 MW (76.5 MW).

**Section 2  
Island Interconnected Supply and Demand**

Tue, Nov 26, 2019	Island System Outlook <sup>3</sup>	Seven-Day Forecast	Temperature (°C)		Island System Daily Peak Demand (MW)	
			Morning	Evening	Forecast	Adjusted <sup>7</sup>
Available Island System Supply: <sup>5</sup>	1,817 MW	Tuesday, November 26, 2019	4	3	1,230	1,136
NLH Island Generation: <sup>4</sup>	1,365 MW	Wednesday, November 27, 2019	4	2	1,240	1,146
NLH Island Power Purchases: <sup>6</sup>	150 MW	Thursday, November 28, 2019	4	2	1,220	1,126
Other Island Generation:	200 MW	Friday, November 29, 2019	1	3	1,350	1,254
ML/LIL Imports:	102 MW	Saturday, November 30, 2019	4	4	1,200	1,106
Current St. John's Temperature & Windchill:	4 °C	Sunday, December 01, 2019	1	0	1,325	1,230
7-Day Island Peak Demand Forecast:	1,350 MW	Monday, December 02, 2019	-1	-1	1,315	1,220

**Supply Notes For November 26, 2019**

- 3
- Notes:
1. Generation outages for running and corrective maintenance are included. These are not unusual for power system operations. They generally do not impact customer supply. The power system operators schedule outages to system equipment whenever possible to coincide with periods when customer demands are low and sufficient supply reserves are available. However, from time to time equipment outages are necessary and reserves may be impacted.
  2. Due to the Island system having no synchronous connections to the larger North American grid, when there is a sudden loss of large generating units there may be a requirement for some customer's load to be interrupted for short periods to bring generation output equal to customer demand. This automatic action of power system protection, referred to as under frequency load shedding (UFLS), is necessary to ensure the integrity and reliability of system equipment. Under frequency events have typically occurred 5 to 8 times per year on the Island Interconnected System and the resultant customer load interruptions are generally less than 30 minutes. With the activation of the Maritime Link frequency controller during the winter of 2018, UFLS events have occurred less frequently.
  3. As of 0800 Hours.
  4. Gross output including station service at Holyrood (24.5 MW) and improved NLH hydraulic output due to water levels (35 MW).
  5. Gross output from all Island sources (including Note 4).
  6. NLH Island Power Purchases include: CBPP Co-Gen, Nalcor Exploits, Rattle Brook, Star Lake, Wind Generation and capacity assistance (when applicable).
  7. Adjusted for curtailable load, market activities and the impact of voltage reduction when applicable.

**Section 3  
Island Peak Demand Information  
Previous Day Actual Peak and Current Day Forecast Peak**

Mon, Nov 25, 2019	Actual Island Peak Demand <sup>8</sup>	16:50	1,267 MW
Tue, Nov 26, 2019	Forecast Island Peak Demand		1,230 MW

- Notes: 8. Island Demand / LIL / ML Exports (where applicable) is supplied by NLH generation and purchases, plus generation owned and operated by Newfoundland Power and Corner Brook Pulp & Paper (Deer Lake Power, DLP).